

LakeHouse Cove at Waterside

1123 Waterline Court (Lot 439)
Casting Series

Tiller
\$534,000

Tiller

Available August 2024

1,798 sq. ft.
3 Bedroom
2 Bath
2 Car Garage
(Inventory Home To Be Garage Left)

Base Price: \$488,000
Upgrades: \$46,000
Price: \$534,000



New Home Features

- Coastal A Elevation
- 42" Upper Kitchen Cabinets with Crown Molding and GE Appliances
- Quartz Countertops in Kitchen and Bathrooms
- Upgraded Kitchen Sink
- Upgraded Carpet in Bedrooms
- Upgraded Tile in Foyer, Kitchen, Great Room, Dining Room, Bathrooms, and Laundry Room
- Upgraded Tile in Owner's Bath Shower
- 8' Interior Doors
- Comfort Height Toilets
- Upgraded Moen Plumbing Fixtures
- Additional Lighting
- Additional Electrical
- Great Room Opens to Large Lanai
- 8' Sliding Glass Doors to Lanai
- Gas Rough-In on Lanai
- Optional Tempered Glass Window in Bath 2
- Tankless Gas Water Heater

Community Features

- Amenity Center featuring: Lakehouse, Pool, Spa, Fitness Center, Boathouse, Play Areas, Event Lawn, Sunset Lawn, Poolside Cabanas, Bocce Court, Pickleball Courts, Firepits, 2 Dog Parks, Trail System, and Water Taxi Pick Up Location
- Convenient Access to Future Downtown Waterside Place
- Close to Gulf Coast Beaches
- Minutes Away to World Class Shopping and Dining
- Close to Several Area Hospitals
- Sarasota International Airport - 25 Minutes
- Tampa International Airport - 70 Minutes



Homes by Towne
homesbytowne.com

LAKEHOUSE COVE AT WATERSIDE MODEL CENTER: 7915 Waterbend Trail | Sarasota, FL 34240 | 941-361-2536

HOMES BY TOWNE REALTY INC. SALES ASSOCIATES:

Sarah Lowry slowry@homesbytowne.com | 941-400-9026

Rita Suarez rsuarez@homesbytowne.com | 239-220-6341

Lee Trompke ltrompke@homesbytowne.com | 941-737-8538

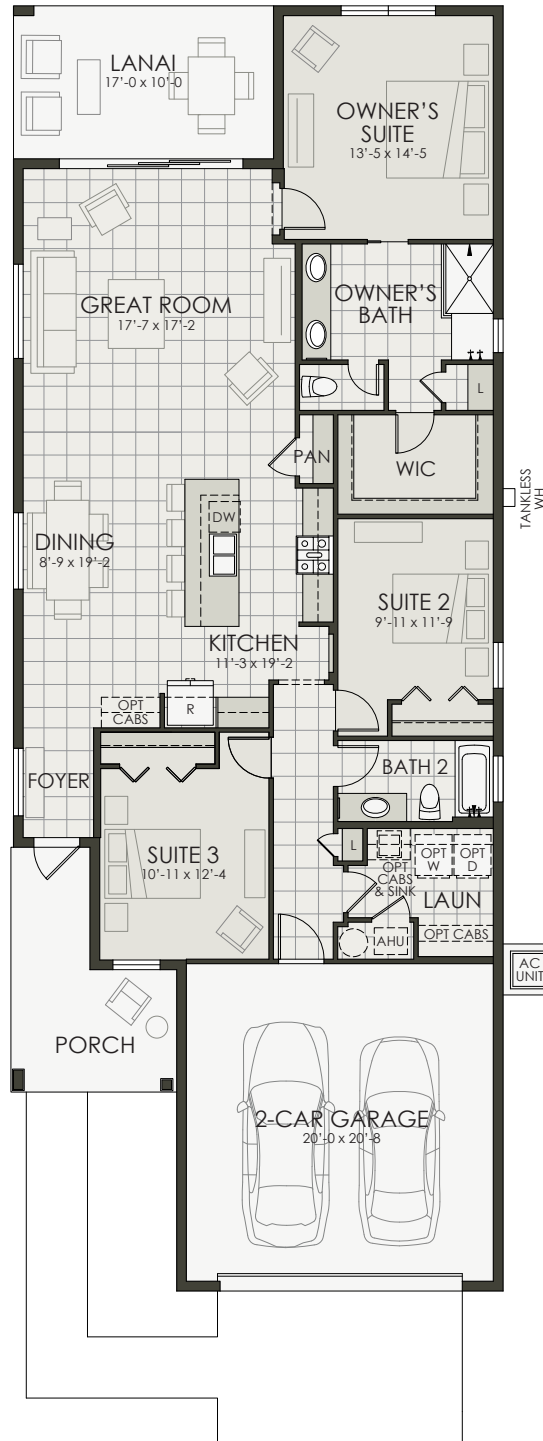
Marissa Stephenson mstephenson@homesbytowne.com | 941-448-1755



LakeHouse Cove at Waterside

1123 Waterline Court (Lot 439)
Casting Series

Tiller
\$534,000



Inventory Home To Be Garage Left

Developer reserves the right to modify floor plans, elevations, specifications, features and prices without prior notice. Square footage and room sizes are approximate. Exterior treatments, window locations and room configurations may vary with elevation. Some decorating treatments in and around the model homes may not be included in the list price and are for display purposes only. All renderings and floor plans are artistic conceptions, and are not intended to be an actual depiction of the buildings, fencing, driveways or landscaping. © 2022 Homes by Towne®



Homes by Towne
homesbytowne.com

LAKEHOUSE COVE AT WATERSIDE MODEL CENTER: 7915 Waterbend Trail | Sarasota, FL 34240 | 941-361-2536

HOMES BY TOWNE REALTY INC. SALES ASSOCIATES:

Sarah Lowry slowry@homesbytowne.com | 941-400-9026

Rita Suarez rsuarez@homesbytowne.com | 239-220-6341

Lee Trompke ltrompke@homesbytowne.com | 941-737-8538

Marissa Stephenson mstephenson@homesbytowne.com | 941-448-1755

